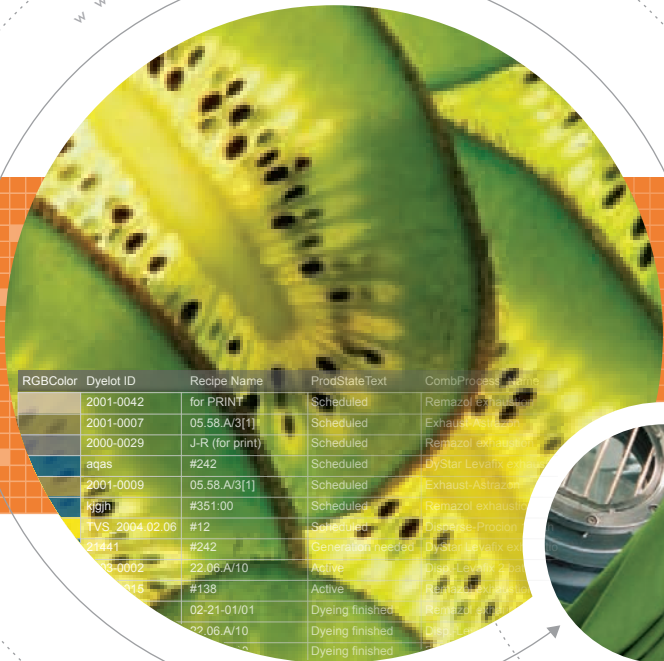


www.datacolor.com



RGBColor	Dyelot ID	Recipe Name	ProdStateText	CombProcess	Machine
	2001-0042	for PRINT	Scheduled	Remazol	Exhaust
	2001-0007	05.58.A/3{1}	Scheduled	Exhaust	Exhaust
	2000-0029	J-R (for print)	Scheduled	Remazol	Exhaust
	aqas	#242	Scheduled	DyStar	Levalix
	2001-0009	05.58.A/3{1}	Scheduled	Exhaust	Astuzan
	kjgjn	#351:00	Scheduled	Remazol	Exhaust
	TVS_2004.02.06	#12	Scheduled	DyStar	Procion
	21441	#242	Generalist needed	DyStar	Levalix
	08-0002	22.06.A/10	Active	DyStar	Levalix
	00015	#138	Active	Remazol	Exhaust
	02-21-01/01		Dyeing finished	Remazol	Exhaust
	02.06.A/10		Dyeing finished	DyStar	Levalix
			Dyeing finished		



**MATCH**   
 Three change card  
 before each color  
 change to ensure  
 consistent color

# SOPHISTICATED PROCESS OPTIMIZATION

Cost-Effective  
Operation

maximum productivity

## Automatically Optimizes Production Recipes

Datacolor is aware of the complexity of shepherding a color recipe from the laboratory into production. With increasing pressure for smaller production lots, shorter time to market and intricate blends, the only way to optimize time, recipe development and production is to have a broad knowledge base taken directly from dyers themselves.

Datacolor PROCESS™ is a unique software solution that uses the knowledge of the experts in your company to help you manage dyeing recipes and processes. It is so effective that you will feel the benefits throughout the dyehouse... all the way to the bottom line.

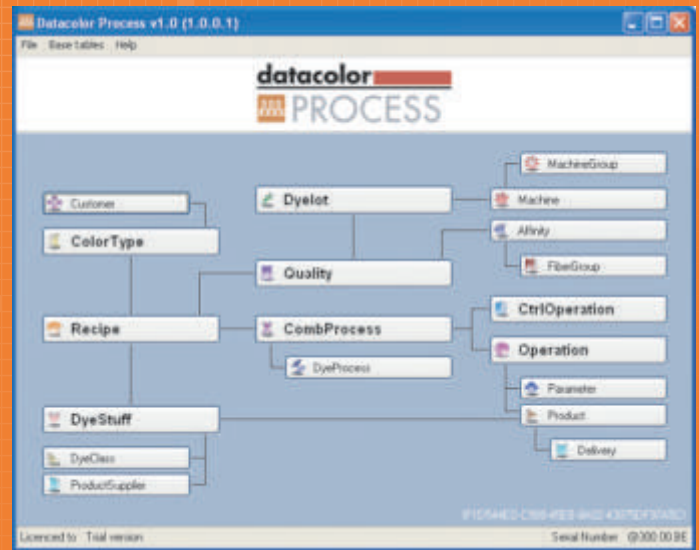
## Understands the Way You Work

Designed by dyers for dyers, Datacolor PROCESS™ is a benefits-rich system that automates every aspect of sophisticated recipe management and optimization. Because it is based on your knowledge about behavior of dyestuffs, auxiliaries, processes, substrates and machines, as well as your customer requirements, it is able to adapt to your specific demands and respond to your organization's unique workflow. Dyeing textiles depends on distinctive factors. You know them; we reflect them – always.

## Improves Your Bottom Line

Datacolor PROCESS™ automatically creates or specifies the best production recipe for any color dyed on a specific article and for a particular customer. It can manage hundreds of different production recipes while simultaneously optimizing the recipes by relevant dyeing requirements. As a result, your entire operation will become substantially more efficient and productive, speeding deliveries and tangibly reducing costs.

Article	Dyeing	Recipe Name	Production Unit	Comb/Process	Status	Conversion	Quality	Rate	Machine
2001-0041	04-PT001	Scheduled	Pre-washed substrate	100	10000	100	10000	10000	10000
2001-0042	04-PT001	Scheduled	Pre-washed substrate	100	10000	100	10000	10000	10000
2000-0026	14-10000	Scheduled	Pre-washed substrate	100	10000	100	10000	10000	10000
2001-0039	04-PT001	Scheduled	Pre-washed substrate	100	10000	100	10000	10000	10000
2001-0038	04-PT001	Scheduled	Pre-washed substrate	100	10000	100	10000	10000	10000
2001-0037	04-PT001	Scheduled	Pre-washed substrate	100	10000	100	10000	10000	10000
2001-0036	04-PT001	Scheduled	Pre-washed substrate	100	10000	100	10000	10000	10000
2001-0035	04-PT001	Scheduled	Pre-washed substrate	100	10000	100	10000	10000	10000
2001-0034	04-PT001	Scheduled	Pre-washed substrate	100	10000	100	10000	10000	10000
2001-0033	04-PT001	Scheduled	Pre-washed substrate	100	10000	100	10000	10000	10000
2001-0032	04-PT001	Scheduled	Pre-washed substrate	100	10000	100	10000	10000	10000
2001-0031	04-PT001	Scheduled	Pre-washed substrate	100	10000	100	10000	10000	10000
2001-0030	04-PT001	Scheduled	Pre-washed substrate	100	10000	100	10000	10000	10000
2001-0029	04-PT001	Scheduled	Pre-washed substrate	100	10000	100	10000	10000	10000
2001-0028	04-PT001	Scheduled	Pre-washed substrate	100	10000	100	10000	10000	10000
2001-0027	04-PT001	Scheduled	Pre-washed substrate	100	10000	100	10000	10000	10000
2001-0026	04-PT001	Scheduled	Pre-washed substrate	100	10000	100	10000	10000	10000
2001-0025	04-PT001	Scheduled	Pre-washed substrate	100	10000	100	10000	10000	10000
2001-0024	04-PT001	Scheduled	Pre-washed substrate	100	10000	100	10000	10000	10000
2001-0023	04-PT001	Scheduled	Pre-washed substrate	100	10000	100	10000	10000	10000
2001-0022	04-PT001	Scheduled	Pre-washed substrate	100	10000	100	10000	10000	10000
2001-0021	04-PT001	Scheduled	Pre-washed substrate	100	10000	100	10000	10000	10000
2001-0020	04-PT001	Scheduled	Pre-washed substrate	100	10000	100	10000	10000	10000
2001-0019	04-PT001	Scheduled	Pre-washed substrate	100	10000	100	10000	10000	10000
2001-0018	04-PT001	Scheduled	Pre-washed substrate	100	10000	100	10000	10000	10000
2001-0017	04-PT001	Scheduled	Pre-washed substrate	100	10000	100	10000	10000	10000
2001-0016	04-PT001	Scheduled	Pre-washed substrate	100	10000	100	10000	10000	10000
2001-0015	04-PT001	Scheduled	Pre-washed substrate	100	10000	100	10000	10000	10000
2001-0014	04-PT001	Scheduled	Pre-washed substrate	100	10000	100	10000	10000	10000
2001-0013	04-PT001	Scheduled	Pre-washed substrate	100	10000	100	10000	10000	10000
2001-0012	04-PT001	Scheduled	Pre-washed substrate	100	10000	100	10000	10000	10000
2001-0011	04-PT001	Scheduled	Pre-washed substrate	100	10000	100	10000	10000	10000
2001-0010	04-PT001	Scheduled	Pre-washed substrate	100	10000	100	10000	10000	10000
2001-0009	04-PT001	Scheduled	Pre-washed substrate	100	10000	100	10000	10000	10000
2001-0008	04-PT001	Scheduled	Pre-washed substrate	100	10000	100	10000	10000	10000
2001-0007	04-PT001	Scheduled	Pre-washed substrate	100	10000	100	10000	10000	10000
2001-0006	04-PT001	Scheduled	Pre-washed substrate	100	10000	100	10000	10000	10000
2001-0005	04-PT001	Scheduled	Pre-washed substrate	100	10000	100	10000	10000	10000
2001-0004	04-PT001	Scheduled	Pre-washed substrate	100	10000	100	10000	10000	10000
2001-0003	04-PT001	Scheduled	Pre-washed substrate	100	10000	100	10000	10000	10000
2001-0002	04-PT001	Scheduled	Pre-washed substrate	100	10000	100	10000	10000	10000
2001-0001	04-PT001	Scheduled	Pre-washed substrate	100	10000	100	10000	10000	10000



## Intelligent Processing

- ❖ Automatically and immediately shares data among the right applications to improve production planning
- ❖ Optimizes the recipe by using the relevant dyeing requirements for each item
- ❖ Allows dyers to insert all production relevant technical data, such as dyestuff data, auxiliary data, machine data and dyeing process parameters to create complete production recipes with all treatments, dye formulations and after treatments
- ❖ Reduces the average machine cycle times, chemicals, auxiliaries and energy consumption
- ❖ Eliminates human guesswork
- ❖ Integrates other Datacolor SPECTRUM™ products to streamline dataflow and speed analysis and production

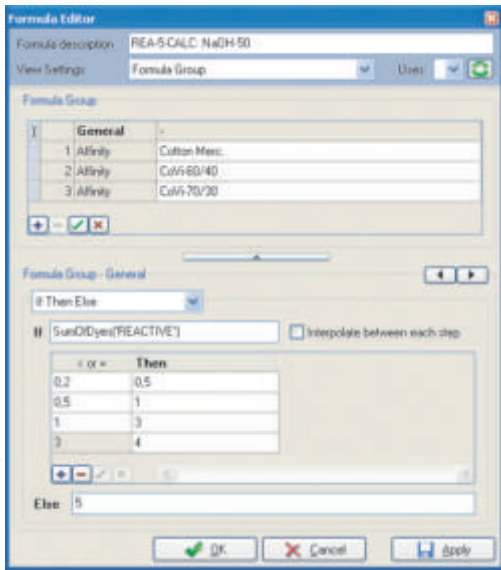
## Flexibility to Fit Your Needs

Datacolor PROCESS™ is designed to link with other systems, such as those used by dye machine supervisors, administration (ERP) or automatic dosing, to streamline dataflow and speed up analyses and production. Only Datacolor allows you to choose the degree of integration based on your specific needs.

Datacolor PROCESS™ comes automatically with those functions most requested within the industry. However, the system can be configured to meet your exact requirements. Among the individual options are:

- ❖ A controlled weighing module
- ❖ An enhanced production capacity overview with dual-level planning tools
- ❖ Fully integrated stock control
- ❖ A printing module that helps group complete print designs with all associated recipes

**For more information, please visit [www.datacolor.com](http://www.datacolor.com).**



## Noticeable Results Throughout the Dyehouse

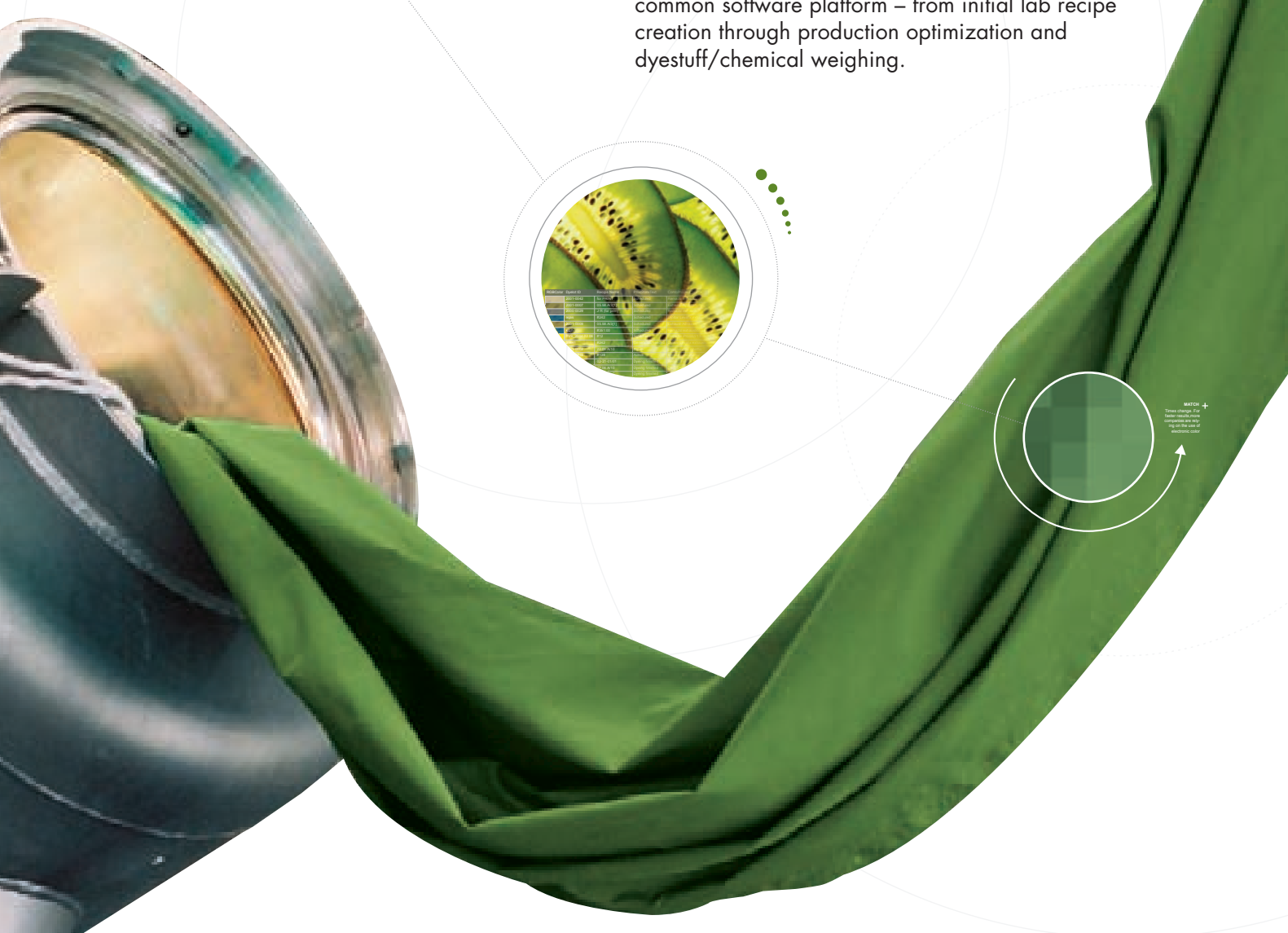
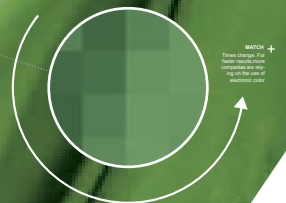
Datacolor PROCESS™ is a leader in recipe management and optimization software. Here are some of the reasons why:

- ❖ Reduces production costs through fully automated optimization process
- ❖ Incorporates dyer expertise, resulting in quality improvements and greater efficiencies
- ❖ Improves planning and production cost analysis capabilities through total dyelot duration and individual cost calculation
- ❖ Avoids dyeing errors through automated process creation with correct product combinations
- ❖ Offers flexible and adaptive software to fit the requirements of your dyehouse
- ❖ Easy-to-use software accommodates dyers needs
- ❖ Shares database that is automatically integrated with other Datacolor SPECTRUM™ products
- ❖ Automated usage of your dyeing know-how

## Because Color Matters



Datacolor PROCESS™ is part of Datacolor SPECTRUM™, the complete solution for successful global color management. Datacolor Process is designed to work seamlessly with Datacolor MATCHTEXTILE™ and Datacolor WEIGH™ to handle the entire textile production process from one common software platform – from initial lab recipe creation through production optimization and dyestuff/chemical weighing.





With its unique features, Datacolor PROCESS™ serves as the production recipe management and optimization package for all textile dyeing applications. The fully functional management software offers a range of optional modules to meet virtually any individual requirements.

### FEATURES

#### Dyestuff data management

- ❖ Input of fiber groups and affinities
- ❖ Automatic creation of dyestuff names
- ❖ Dyestuff exchange

#### Quality/Style management

- ❖ Input of fiber groups and affinities
- ❖ Input of blends
- ❖ Input of all quality specific parameters/auxiliaries for dyeing behavior
- ❖ List and display of all customer or quality-specific colors and standards

#### Color management

- ❖ List of all recipes and dyelots per color

#### Customer management

- ❖ Input of customer data
- ❖ Customer-specific standard labeling with specific name

#### Recipe and Process management

- ❖ Input of complete production recipes, incl. specific recipe information
- ❖ Pass/Fail results of recipes to the standard can be displayed on recipe card
- ❖ Storage of recipe status (theoretical, laboratory, production)
- ❖ Printout of lab recipes, simple production recipes and complete production process
- ❖ Recipe search via different search criteria
- ❖ Automatic recipe update upon dyestuff concentration changes
- ❖ Specific information like finishing type, preparation type, technical specification and "to do" date for generation of dyeing process
- ❖ Creation of modular production recipes including process handling for single treatments and multiple treatments
- ❖ Handling of exhaust, continuous and semi-continuous processes
- ❖ Specific linked processes for production adds and re-dyes
- ❖ Automatic process selection through defined rules
- ❖ "If-then-else" rules that vary according to dyestuff amounts in the recipe, the affinity or dyeing machine group
- ❖ Recipe evaluation based on product costs
- ❖ Tank number and volume can be calculated, depending on total volume (Pad-batch)

#### Production management

- ❖ Batch ticketing: simple or advanced with additional information
- ❖ Input and list of defined dyeing lots
- ❖ Calculation of chemical /dye quantities for the dye kitchen
- ❖ Output of simple production lots (simple batch ticket)
- ❖ Output of production adds (production ticket) with additional technical information
- ❖ Category creation of qualities/styles and customer
- ❖ Machine management with min/max machine load, liquor ratio, etc.
- ❖ Choice of dyeing machine with min/max control of machine capacity, liquor ratio, pickup etc.
- ❖ Input of delivery and required date
- ❖ Display of Pass/Fail results in the dyelot card
- ❖ Sorting of production lots
- ❖ History of production lots and production adds

#### Cost analysis (recipes and processes)

- ❖ Cost calculation of lab recipes
- ❖ Production cost calculation incl. dyestuffs and chemicals
- ❖ Cost comparison of different processes/cost optimization
- ❖ History of production cost

### OPTIONAL MODULES THAT EXPAND DATACOLOR PROCESS CAPABILITIES TO MEET INDIVIDUAL NEEDS:

#### Basic level inventory module

- ❖ Definition of specific stock conditions (minimum and optimum amount, drum capacity) for each product and for lists of products below minimum quantity
- ❖ Automatic product quantity update for those production batches marked as finished, incl. low stock alert
- ❖ Display of added, used and adjusted quantities
- ❖ Display of all dyelots by specific product
- ❖ Report of stock value with current price and predefined consumption reports

#### Advanced inventory module

- ❖ Manages all reservations, deliveries and orders, with the ability to accommodate variations in product strength and price delivery

#### Customized form editor module

- ❖ Report Explorer for creation and customization of reports, including:
  - ▶ Production card customization
  - ▶ Report creation using a "wizard," e.g. list of dyelots by machine and with additions per month; list of recipes using specific dyestuffs
- ❖ User-friendly tool for creation and modification of record lists, e.g. all products below stock minimum
- ❖ Export of generated report lists into text files

#### Dyeorder module

- ❖ Groups or splits dyelots that are dyed using the same recipe, for maximum machine capacity usage

#### Advanced formula/rules module expands the automated optimization functionality

- ❖ Control of dyestuff combinability
- ❖ New bath generation for continuous dyeing corrections
- ❖ Display of total forecasted process time in temperature/time diagrams
- ❖ Introduction of batch parameters and adaptation of chemicals and parameters
- ❖ Calculation/optimization of production cost for different dyestuff, chemicals and machine operation choice
- ❖ Optimization of chemicals, parameters and dyestuff quantities upon a large choice of conditions, e.g. concentration, customer, machine, LR, etc.

#### Graphical Planboard

- ❖ Fully integrated with Datacolor PROCESS™
- ❖ Visual overview of machine load
- ❖ Immediate visibility of planned, active and finished dyelots
- ❖ Dyelots are represented graphically by the target color
- ❖ Plan dyelots on any machine with verification for machine suitability
- ❖ "Drag and drop" functions easily move a dyelot from one machine to another

#### Advanced scheduler

- ❖ In addition to the planboard, the scheduler allows time forecasts of the dyehouse \*(requires advanced formula module)
- ❖ Real-time dyelot display
- ❖ Automated planning after creation of dyelots in Datacolor PROCESS™
- ❖ Incorporation of offline times
- ❖ Regeneration of dyelots that have been moved to another machine

#### Printing Module

- ❖ Grouping of all relevant printing recipes to be kept as one design

### System Requirements

Pentium® IV (no Celeron®), at 1.9 GHz, 512 MB RAM, 2GB, resolution 1024 x 768, 64 MB true color graphic card, serial port for spectrophotometer, CD-ROM drive, Windows® 2000 pro, XP® pro

#### Americas

+1.609.924.2189  
marketing@datacolor.com

#### Europe

+41.1.835.3711  
ecmarketing@datacolor.com

#### Asia

+852.2420.8283  
asiamarketing@datacolor.com

In over 60 countries ... see [www.datacolor.com/locations](http://www.datacolor.com/locations) for a complete list.