

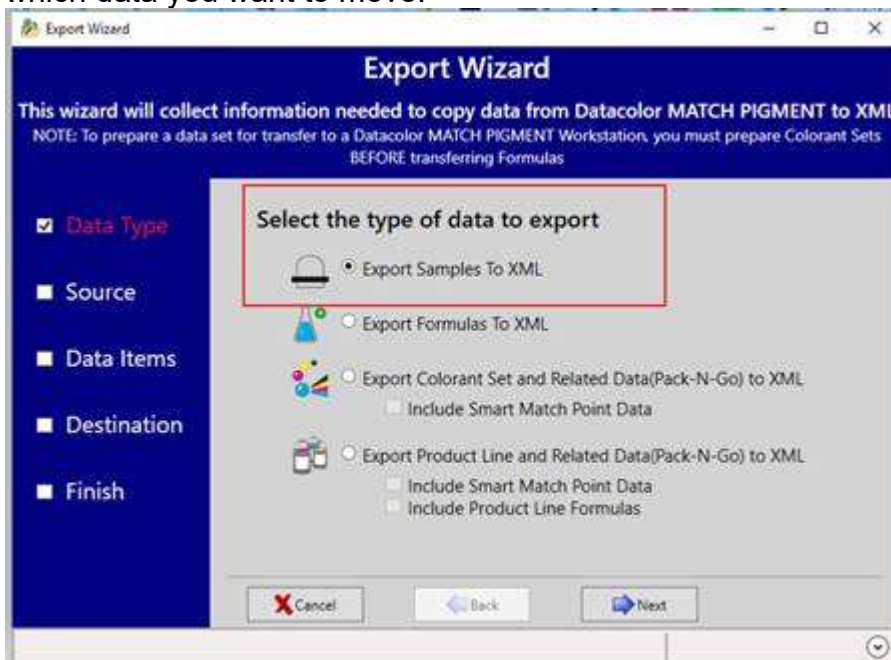
# Export/Import Functions in DMPPlus

If moving “bulk” data between Datacolor Match Pigment systems, it is easiest to use the Export and Import Wizards available on the DMP Navigator Bar:

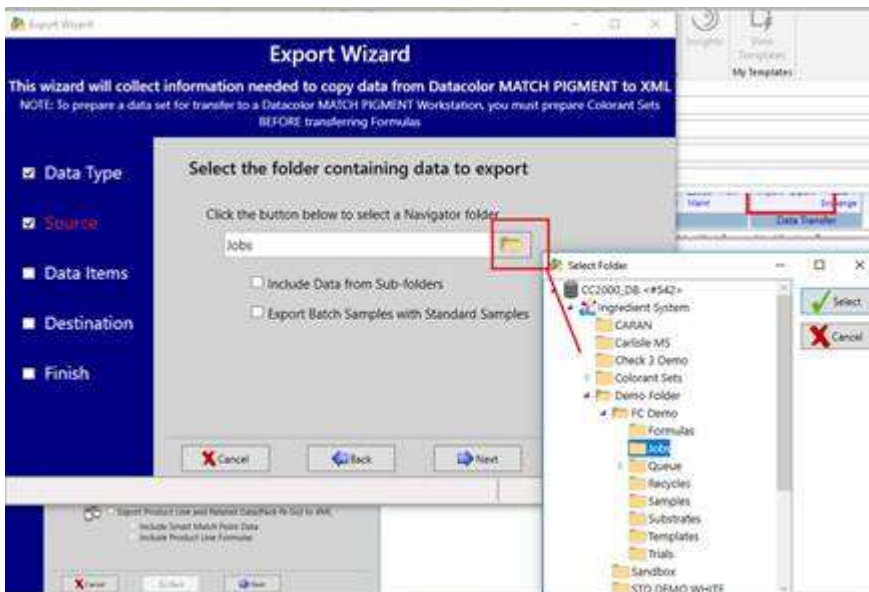


## EXPORT

From the **source** PC select “Export” and the wizard will walk you through the selection of which data you want to move:



Make selection of the data source folder:



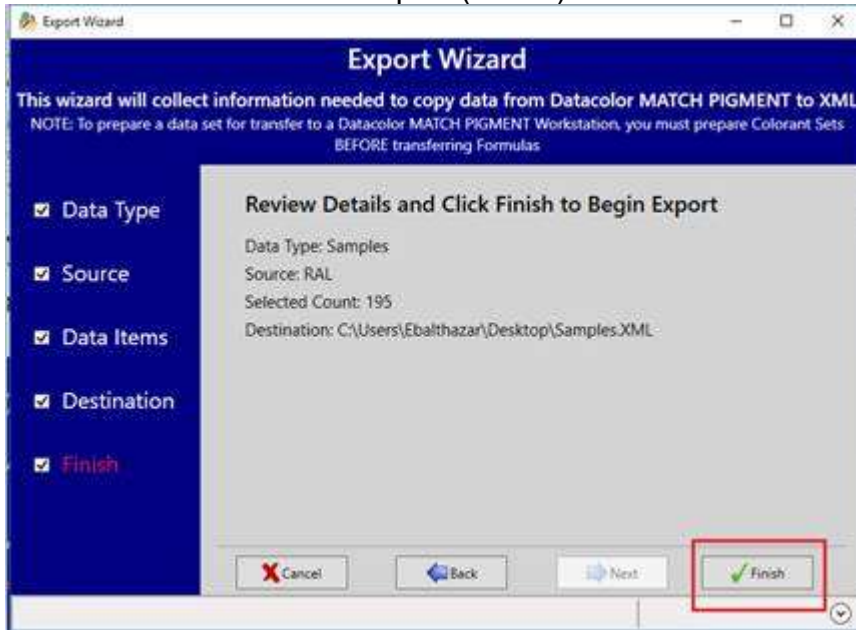
Confirm samples to include in the export:



Pick output file name and location:



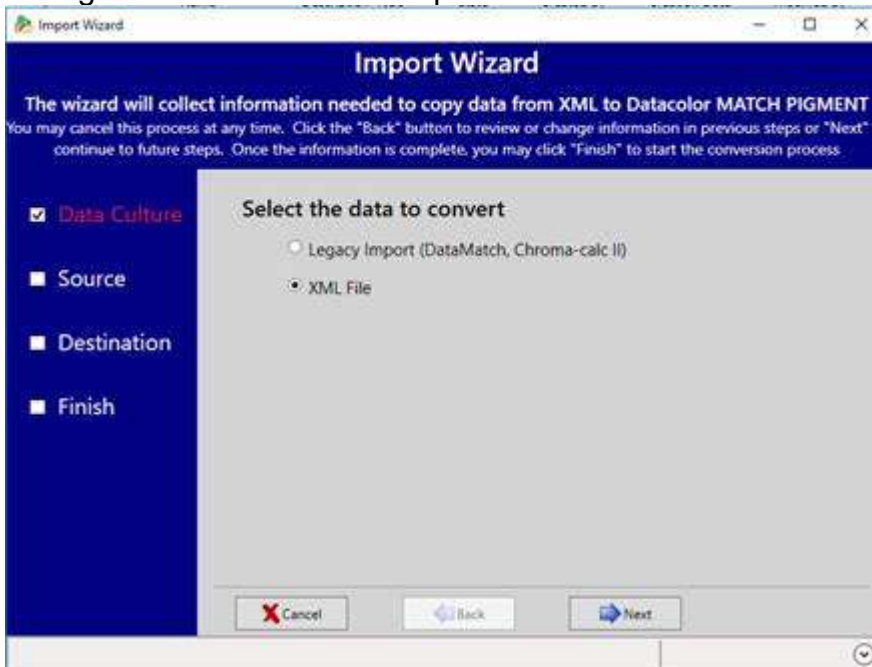
Confirm and execute the export (Finish):



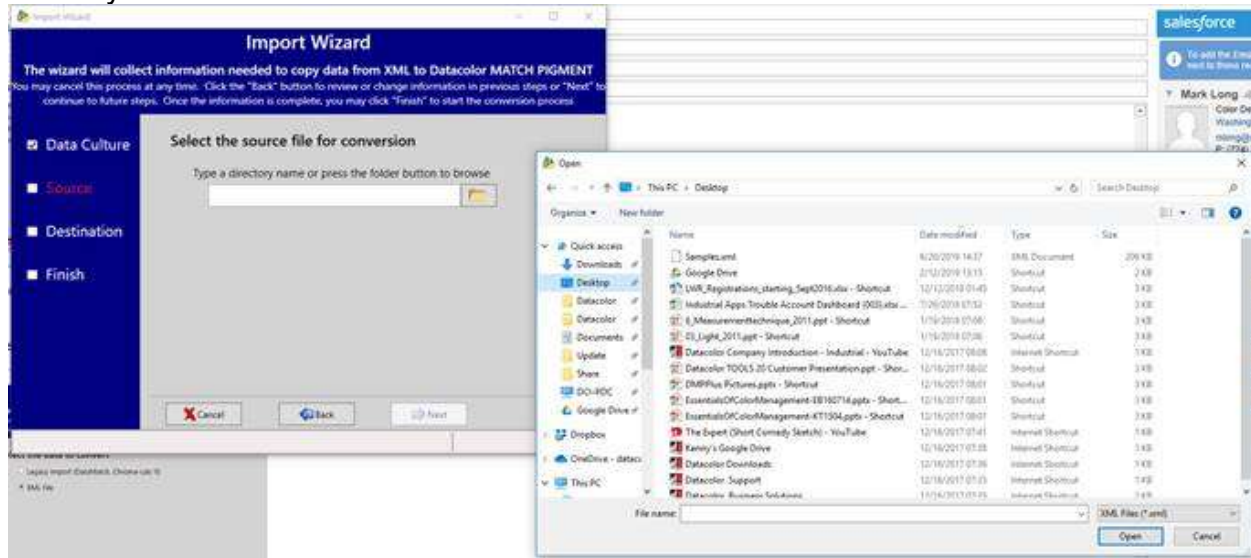
Move the file to the target PC.

## IMPORT

On the **target** PC select "Import" from the DMP Navigator Bar and the wizard will walk you through the selection of the import file and database folder for the import :

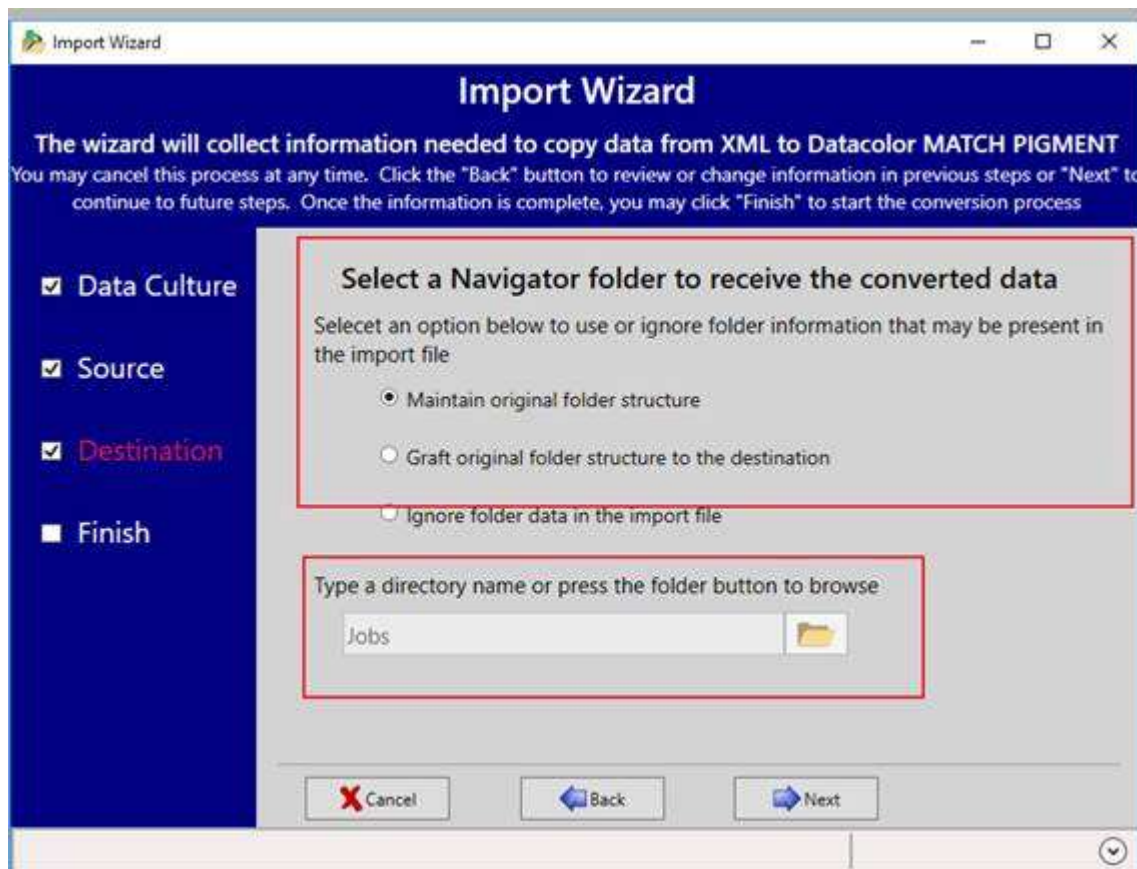


Select your source file:



Select how/where you want the data imported:

- Maintain original folder structure
  - Usually will place under the top level Ingredient System.
- Graft original folder structure to destination.
  - Use if wanting to create subfolder under a new parent folder.



Select how duplicates are to be handled and execute the import (Finish):

The screenshot shows the 'Import Wizard' window. The title bar reads 'Import Wizard'. The main header area is dark blue with the text 'Import Wizard' in white. Below the header, a message states: 'The wizard will collect information needed to copy data from XML to Datacolor MATCH PIGMENT. You may cancel this process at any time. Click the "Back" button to review or change information in previous steps or "Next" to continue to future steps. Once the information is complete, you may click "Finish" to start the conversion process.' On the left side, there is a dark blue sidebar with four checked items: 'Data Culture', 'Source', 'Destination', and 'Finish' (which is highlighted in red). The main content area is light gray and titled 'Review Details and Click Finish to Begin Import'. It contains the following information: 'Import Type: XML File', 'Source: C:\Users\Ebalthazar\Desktop\Samples.xml', 'Destination: Jobs', and 'Prefix (Optional):' followed by an empty text box. Below this, it asks 'Replace existing data (duplicates) with imported data:' and provides three radio button options: 'Always', 'Never (Skip Importing Duplicates)' (which is selected), and 'When imported data is newer than existing data'. At the bottom, there are four buttons: 'Cancel' (with a red X icon), 'Back' (with a blue left arrow icon), 'Next' (with a blue right arrow icon), and 'Finish' (with a green checkmark icon). A small circular icon with a downward arrow is located in the bottom right corner of the window.