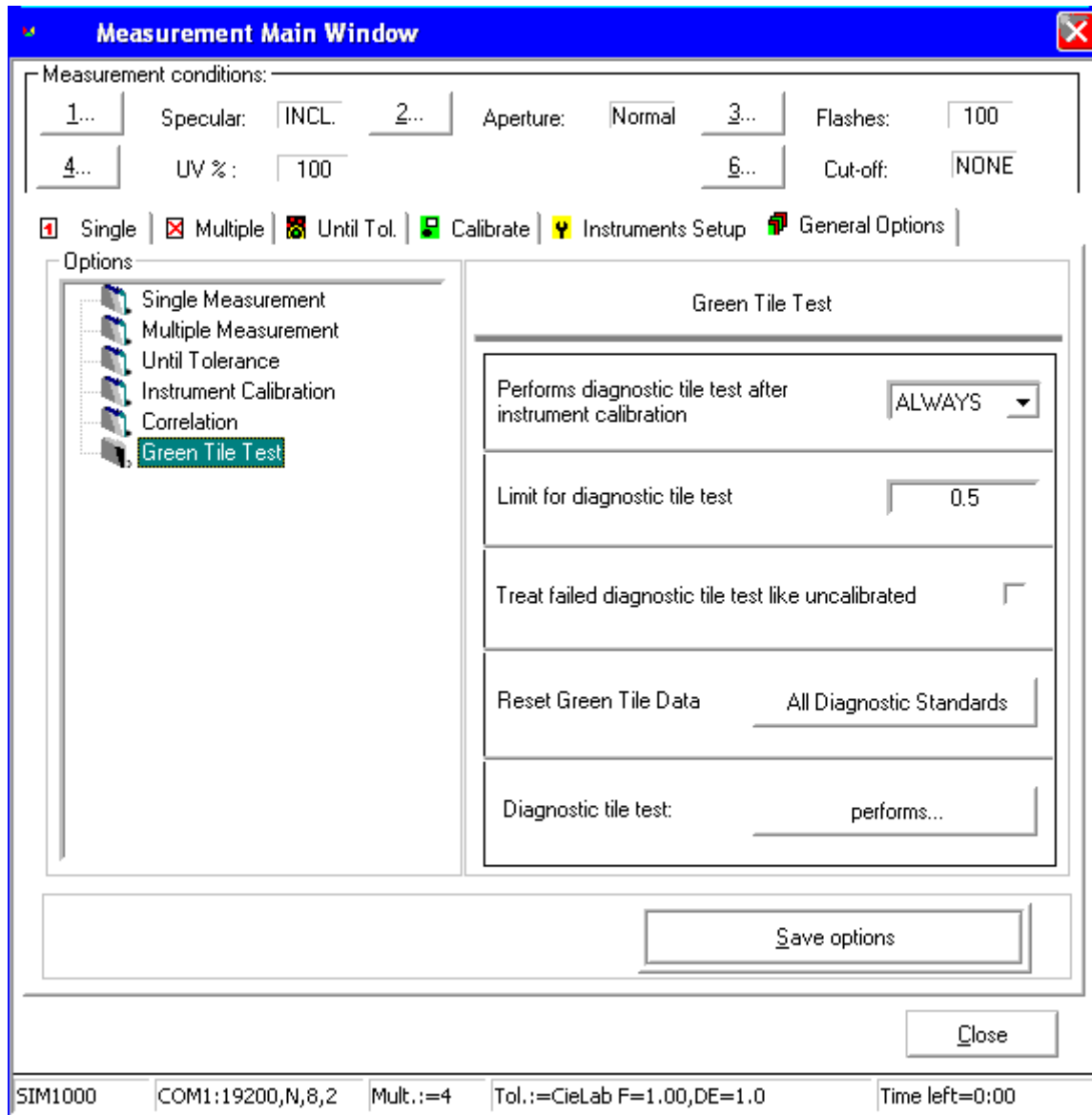


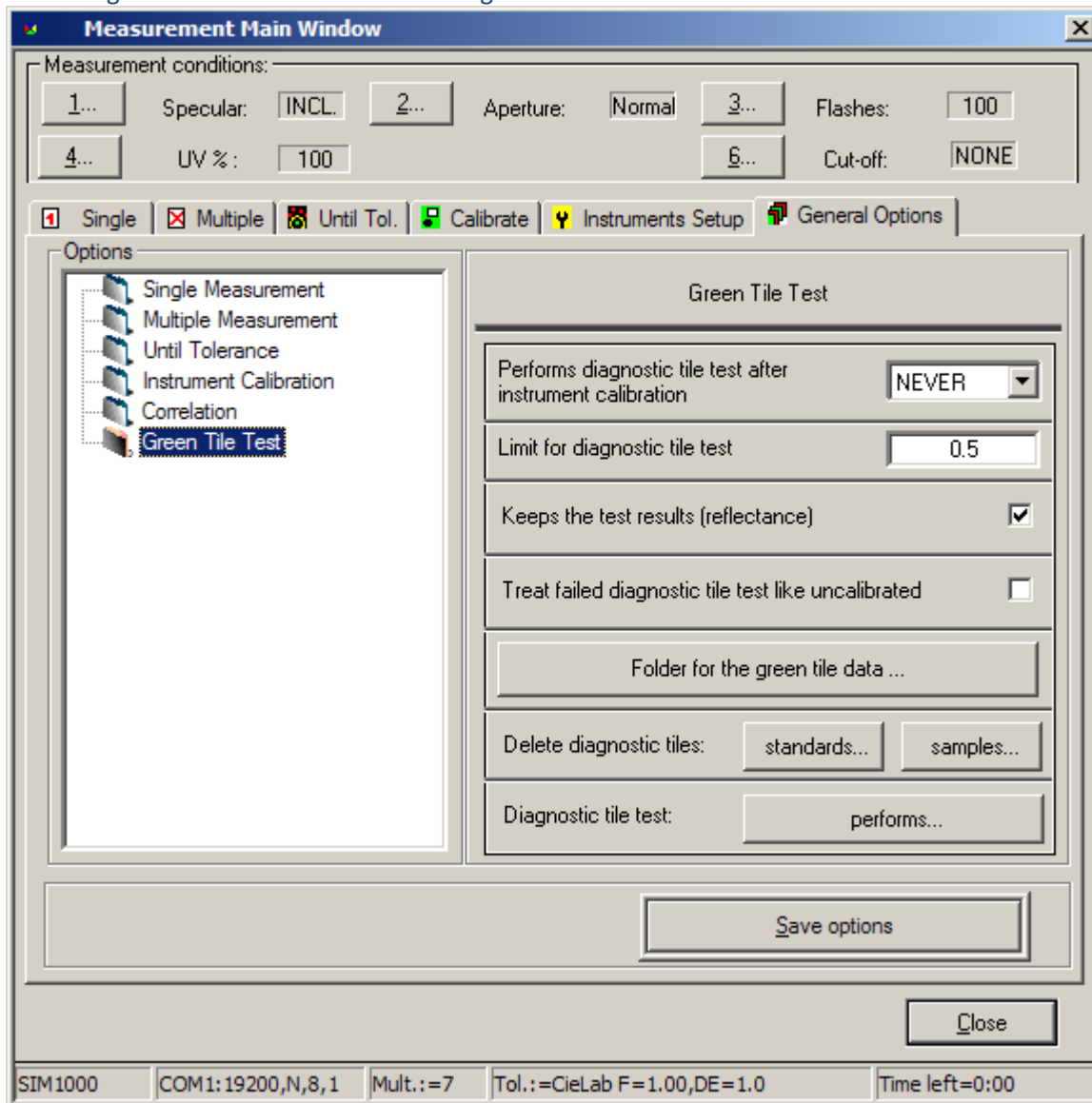
Resetting or Deleting the Green Tile Standard Tools 2.x.

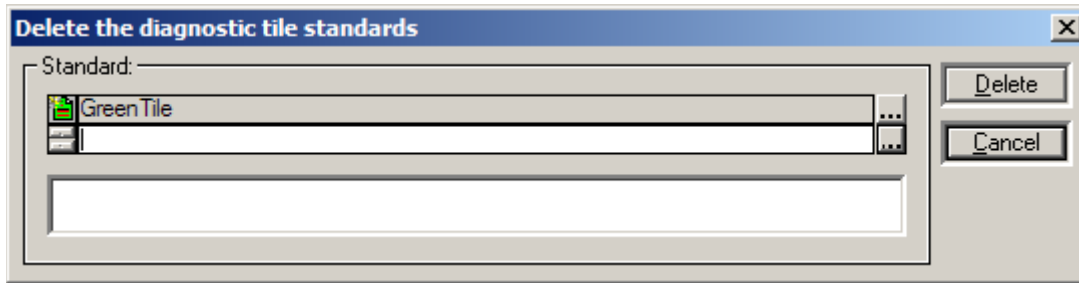
You will have to delete the green tile standard. In Tools 2.x go to 'Instrument' tab then click on the button 'Setup'. Then choose the tab at the top choose 'General option'. On the left-hand side of this tab choose 'Green Tile Test'. **Option 1 For Paint or Textile software where Green tile not stored to database. Click on the option 'Reset Green Tile Data' 'All Diagnostic standards'. Green tile standards will be deleted and restored on next calibration.**



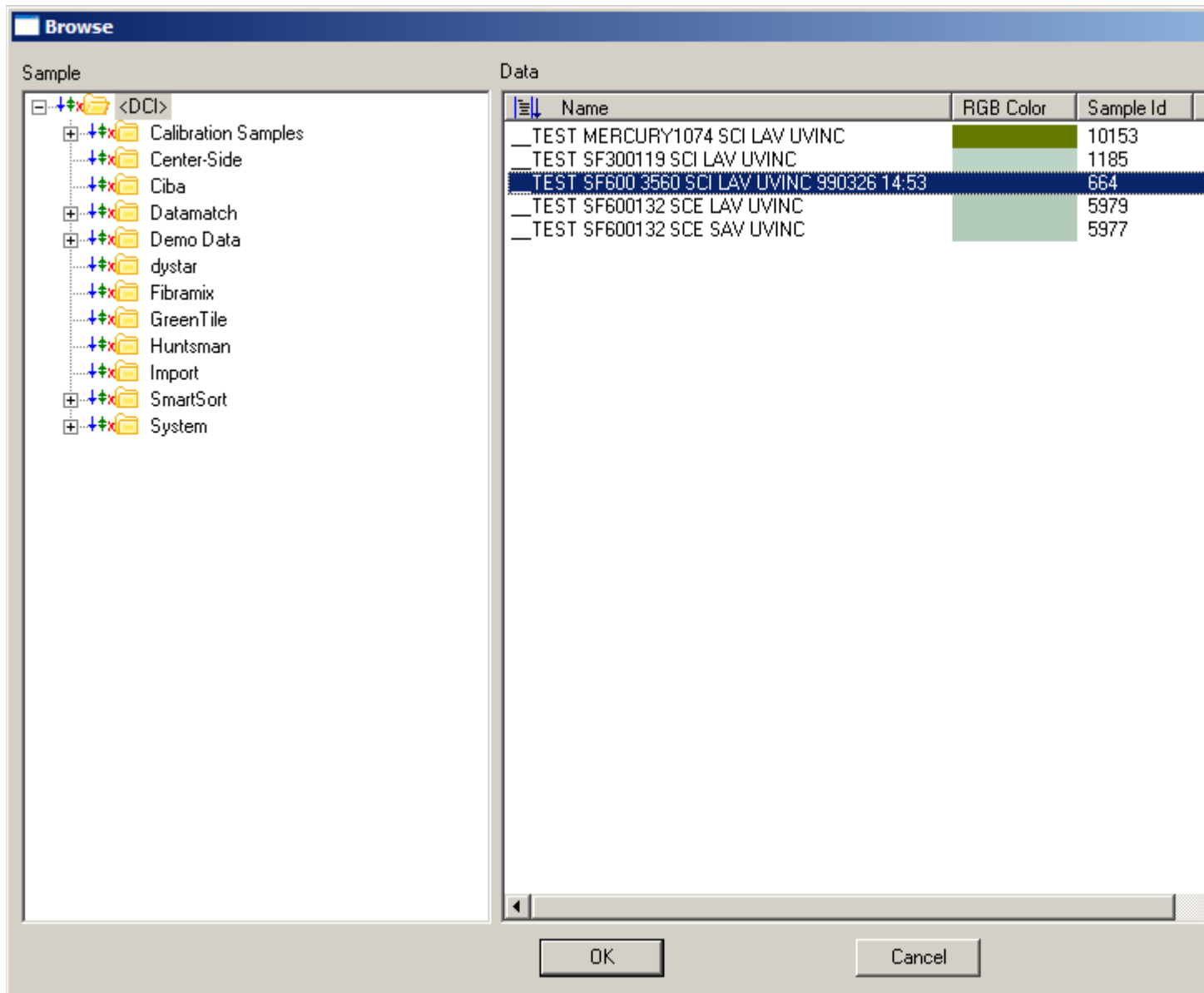
Option 2. Textile Database- Where the green tile stored to the database (see below)

On the right-hand side choose 'Delete Diagnostic Tiles: Standards' button.





Browse the database and choose the **<root folder >** on the left-hand side, in the example below it is the 'dci' folder. On the right-hand side delete the green tile standard with the serial number of your instrument. See example below. In this example instrument serial number is 3560. Highlight it then click 'ok' then 'delete'. To reset all green tile standards, they can only be deleted one at a time. Once this is done the system will re-store the green tile on the next calibration.



If this does not work. On this page you can turn off the diagnostic tile test by choosing 'Never' under 'Performs diagnostic tile test.....' and the diagnostic tile test will not be run.