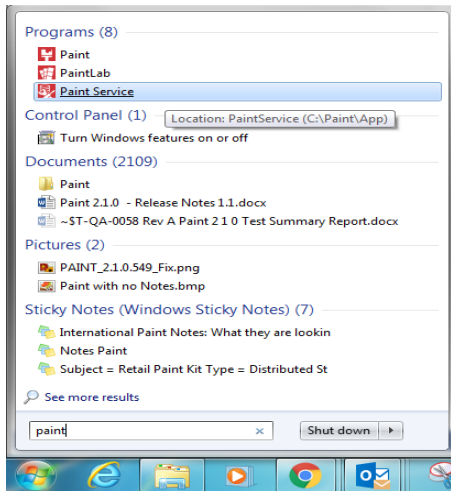


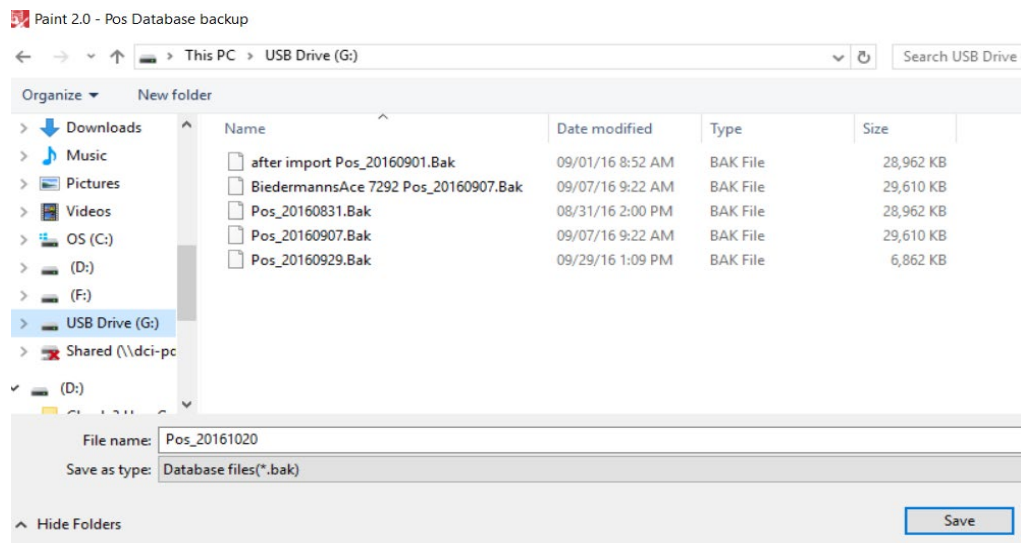
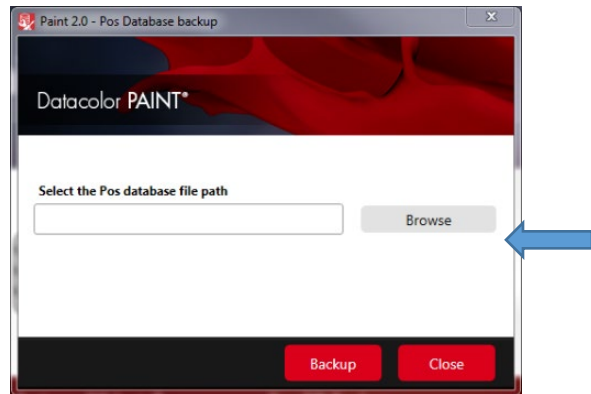
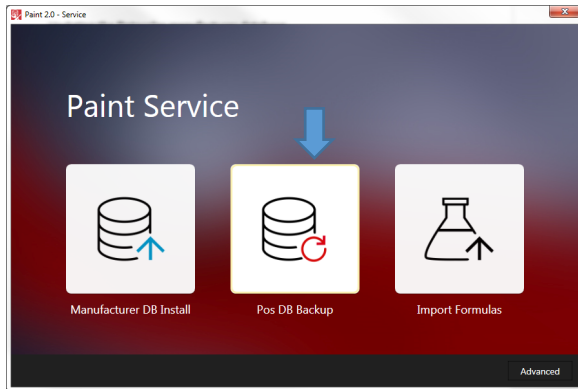
Backup your customer files to a USB drive.

Go to the start menu and type “**paint**” and select **Paint Service**



Click **POS DB Backup**.

Click **Browse** to select a location to backup the file.



Save this file to a flash drive. This is the best option or to the C Drive\Paint folder until you can obtain a flashdrive.. **If you save to the paint folder and your computer crashes you will have lost all you customer files. Back up at least monthly. Back up before all updates are installed.**

