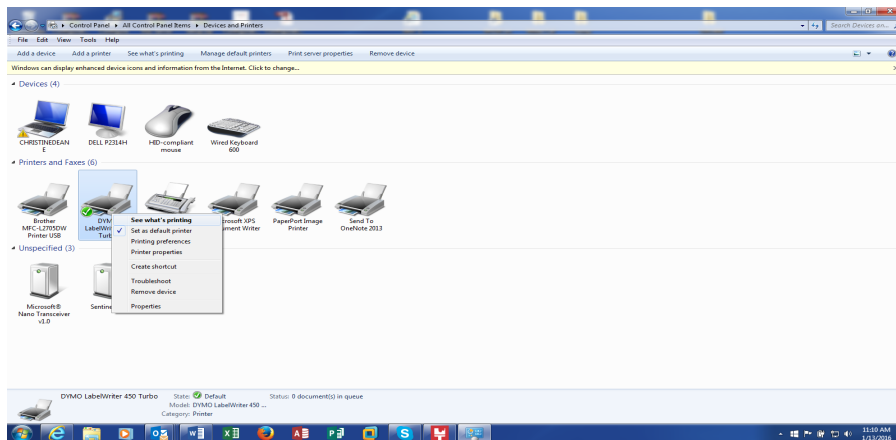


Depending on the label you are using you may need to change the printer setup in Windows. Follow these steps if needed.

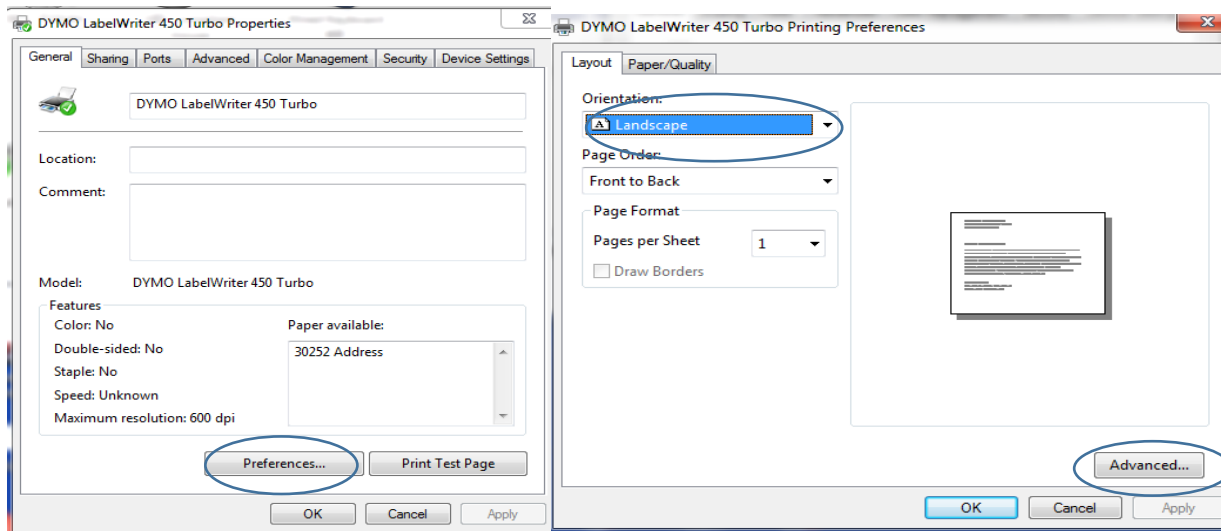
Start/Control Panel/ Devices and Printers. Your printer (in most cases it will be a Dymo printer) should have a green check mark to show it is the default printer. If not right click on the printer and select set as default printer.



Right click on the Dymo and select Printer Properties

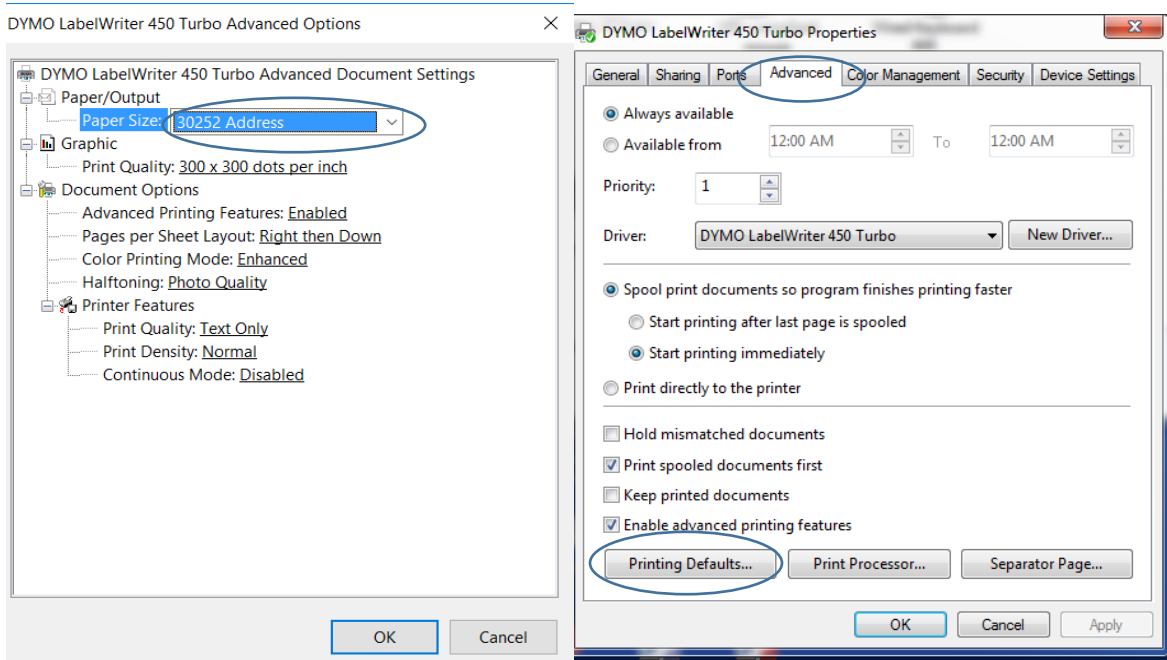


Select Preferences: Orientation should be Landscape. Select the Advanced tab.

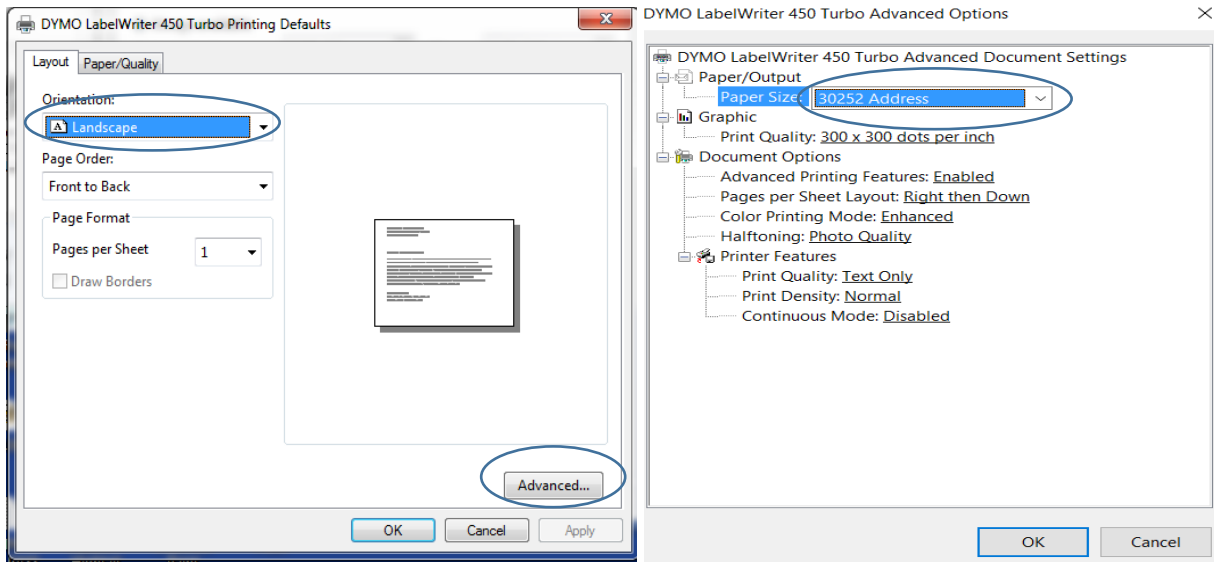


Select the label you need: 30258 for Diskette 2 1/14 X 2 3/4, 30256 2X 4 for the shipping label.

Click Ok and Apply/OK until you get back to the Printer Properties screen. Select the Advanced tab at the top of the screen. Select Printing Defaults on the bottom left.



Orientation should be Landscape. Make sure that the correct label is selected. This must match what was previously selected.



Click Ok and Apply/OK until you get back to the Devices and Printers screen. This completes the printer label setup.

